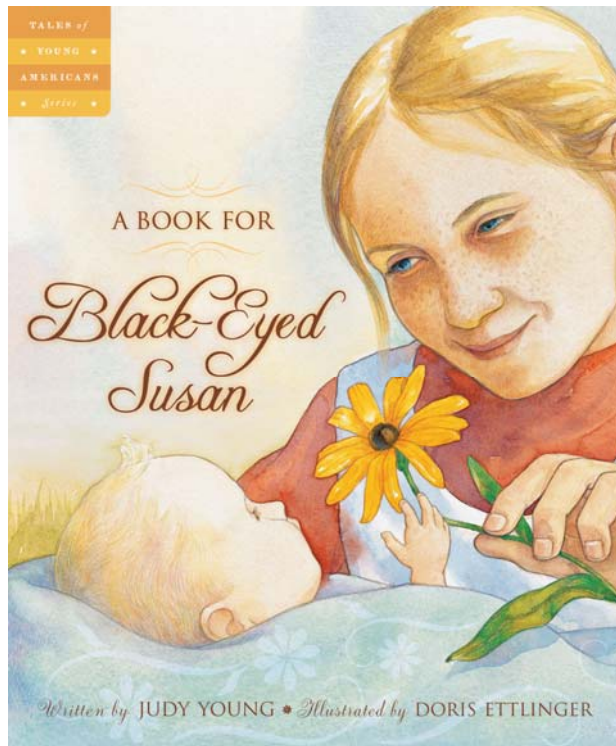


# Teacher's Guide



## A Book for Black-Eyed Susan

**Author: Judy Young**  
**Illustrator: Doris Ettliger**

Guide written by Jillian Hume

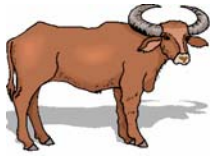
**This guide may be reproduced for use with this express written consent of Sleeping Bear Press**

Published by

**Sleeping Bear Press**  
**315 E. Eisenhower Parkway, Suite 200**  
**Ann Arbor, MI 48108**  
**800-487-2323**  
[www.sleepingbearpress.com](http://www.sleepingbearpress.com)

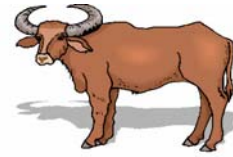
A Book for Black-Eyed Susan ISBN: 9781585364633

Sleeping Bear Press | 800-487-2323 | [www.sleepingbearpress.com](http://www.sleepingbearpress.com)



## Preview and Predict

### A Book for Black-Eyed Susan



**Before** reading *A Book for Black-Eyed Susan*, look through the pictures and answer the following questions. Notice the characters, setting, mood, and colors used to help you answer the questions.

1. What year might this story take place? What clues lead you to believe this? \_\_\_\_\_

\_\_\_\_\_

2. Is the main character a boy or a girl? About how old is he/she? \_\_\_\_\_

3. Where might the characters be going? \_\_\_\_\_

4. What might the reason for their travels be? \_\_\_\_\_

\_\_\_\_\_

\_\_\_\_\_

5. What kind of obstacles or troubles might they be facing? \_\_\_\_\_

\_\_\_\_\_

6. What do you think the quilt pieces represent? \_\_\_\_\_

\_\_\_\_\_

\_\_\_\_\_

7. Do you think the characters in the story get along? Why or why not? \_\_\_\_\_

\_\_\_\_\_

\_\_\_\_\_

8. Do you think that this story has a happy or sad ending? Why? \_\_\_\_\_

\_\_\_\_\_



What is Inference?



Black-Eyed Susan

Read and study the pictures on pages 4-7 in the book *A Book for Black-Eyed Susan*. It is a very emotional scene, but the author, Judy Young, never tells the reader exactly what is happening. Based on the evidence that the words and pictures give, the reader is asked to use these clues to draw a conclusion. This is called inference. Record clues below that will help you determine what happened at the beginning of the story. When you have finished recording your clues, write a brief description of what happened, using your clues to support your idea.

Clues:
- _____
- _____
- _____
- _____

---

---

---

---

---

---

---

---

---

---

# BANG!

Onomatopoeia Poetry

A Book for Black-Eyed Susan



Use the book *A Book for Black-Eyed Susan* to write a poem with at least five examples of onomatopoeia in it. Onomatopoeia is the use of words that sound like the objects they name or the sounds those objects make. Some examples include: zip, meow, woof, bang, gurgle, splash, slurp. Explore the text and the pictures to discover things that the people in the story might be hearing out on the prairie. Below is an example of onomatopoeia poetry.

Boat paddling through the water  
Splish, splash, splish, splash.  
Fish swimming about  
Woosh, woosh, woosh.  
Dogs barking on shore  
Woof, woof, woof.

---

---

---

---

---

---

---

---

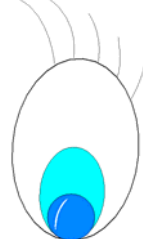
---

---



Through Susan's Eyes

A Book for Black-Eyed Susan



In the story *A Book for Black-Eyed Susan*, after Susan is sent away to live with her aunt, it doesn't say what happens in Susan's life until she starts school in Cora's classroom. Use the space below to write a story, from Susan's perspective, about her life growing up on the West Coast.

---

---

---

---

---

---

---

---

---

---

---

---

---

---

---

---

---

---

---

---

---

---

---



Math Story Problems  
A Book for Black-Eyed Susan



Solve the math story problems below; be sure to show your work.

1. Each wagon in the train has 4 wheels. If there are 25 wagons, how many wheels are there all together?

---

2. If Cora and her family had to travel 1000 miles, and they could only travel 15 miles a day, about how many days might it take them to get to their destination?

---

3. About how old is Susan when she meets Cora at the school? Use clues in the book to help you solve this problem.

---

4. If for every woman traveling there is one girl, one boy, and one man, how many people are there, total, if there are 14 women traveling in the section of the wagon train with Cora?

---

5. If there are 5,280 feet in a mile, and they traveled about 15 miles a day, how many feet did they travel?

---

6. Write your own story problem and have a friend solve it.

---

---

---



Character Feelings

A Book for Black-Eyed Susan



While reading the story *A Book for Black-Eyed Susan*, pay close attention to the words used to describe each character, the dialogue between them, and the illustrations. In the boxes below, record evidence of the characters' feelings throughout the book. Make sure to include page number, evidence, and what they may be feeling.

Page #	Evidence: Quote or illustration <b>Cora</b>	Feeling
Page #	Evidence: Quote or illustration <b>Pa</b>	Feeling
Page #	Evidence: Quote or illustration <b>Aunt Alma</b>	Feeling

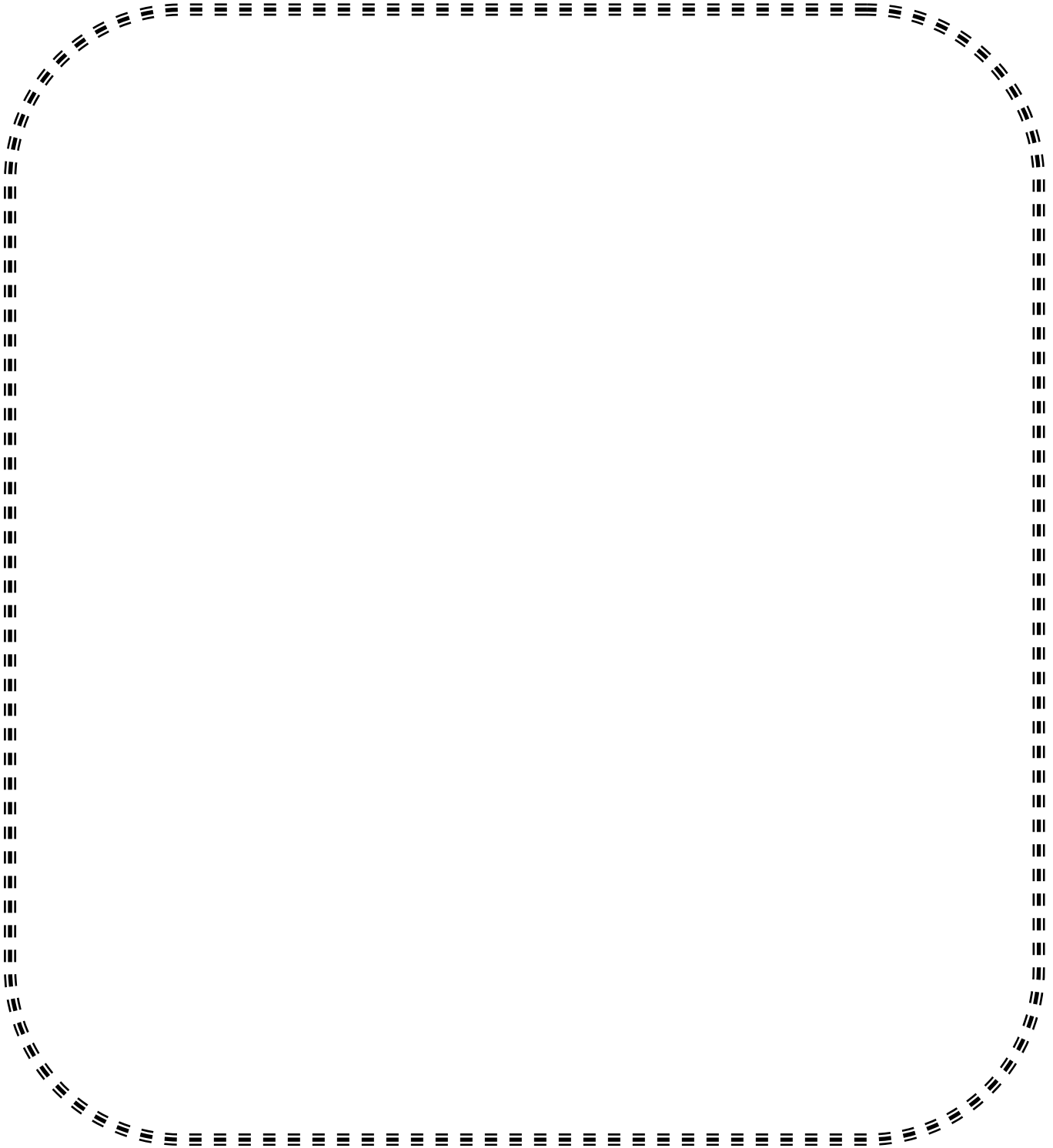


## Quilt Book Page

### A Book for Black-Eyed Susan



Cora created a quilt book in the story *A Book for Black-Eyed Susan*, to represent the crossing of the prairie. Use magazines or colored paper to cut out shapes to create a scene in your life that is important to you. Create many pages to make your own book, or combine your page with others in your class to create a classroom book.







# Word Wizard



## A Book for Black-Eyed Susan

After reading the story *A Book for Black-Eyed Susan*, choose one of the words from the list below and become a word wizard.

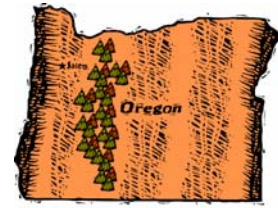
Circle a word:	Slates      Ledger      Prairie Tassel      Pelted      Embroidered      Stitched
Page where your word is found in the book	Page:
Synonyms (a word having the same, or nearly the same meaning)	
Antonyms (a word opposite in meaning from another)	
Number of syllables	
Definition	
Rhyming words	
Draw a picture	
Write the sentence from the book that your word is in	
Write your own sentence	





# Crossword

## A Book for Black-Eyed Susan



Read the story to get the answers to the crossword puzzle.

1. The first page of the book that Cora made was to remember the farmhouse back in \_\_\_\_\_.
2. Across the prairie, they could see a strangely shaped cliff called Chimney \_\_\_\_\_.
3. *A Book for Black-Eyed Susan* was illustrated by Doris \_\_\_\_\_.
4. Cora sat in the back of the \_\_\_\_\_ and watched the wooden cross on the hill become smaller and smaller
5. Cora went south with a minister and his wife so that she could teach \_\_\_\_\_.
6. When the wagon trains divide up, Aunt Alma, Uncle Lee, and Susan will head toward \_\_\_\_\_.

				O															
				R															
				E															
				G															
				O															
				N															



## Shoebox Nature Diorama

### A Book for Black-Eyed Susan



Choose a scene from the story *A Book for Black-Eyed Susan* and create a diorama to turn the scene into a three-dimensional picture.

Use items from nature, things like twigs, rocks, flowers, sticks, sand, etc. to create a shoebox diorama to portray a scene from the book. For example, glue sticks together to make people, use leaves for clouds, and use rocks or dirt as the ground. Use the box below to draw a sketch of the scene you plan on creating. You may choose a picture from the book to recreate, or create a scene from your imagination. Write a short description below your sketch explaining the part of the book for which you are creating a three-dimensional picture.

---

---

---

---



## Landforms



A Book for Black-Eyed Susan

During the journey west, the characters in *A Book for Black-Eyed Susan* pass many landforms. In the table below, define each landform by using a dictionary, and then draw a picture to go along with the definition. Then, indicate whether Cora and her family saw each landform on their journey.

	<b>Definition</b>	<b>Picture</b>	<b>Seen on journey?</b>
Volcano			
Prairie			
Ocean			
Mountain			
Desert			
Cave			
Island			
Valley			



True or False?



A Book for Black-Eyed Susan

After reading the story *A Book for Black-Eyed Susan*, determine if the statements below are true or false. If they are true, write “True” on the line. If they are false, rewrite the sentence to make it correct.

1. Cora suggested to her father that they should change the baby’s name from Marie to Susan. \_\_\_\_\_  
\_\_\_\_\_
2. Cora’s Aunt Alma agreed to take Cora’s sister and raise her. \_\_\_\_\_  
\_\_\_\_\_
3. The first quilt piece Cora made was of Grampa leading the mules to the barn. \_\_\_\_\_  
\_\_\_\_\_
4. Cora joins Susan and goes to California with Aunt Alma and Uncle Lee. \_\_\_\_\_  
\_\_\_\_\_
5. Cora runs away from Pa and the wagon train, but races back when she realizes the wagon train will divide up tomorrow. \_\_\_\_\_  
\_\_\_\_\_
6. Cora asked her aunt if she could borrow her sewing box to create a new baby blanket for Susan.  
\_\_\_\_\_
7. Aunt Alma promises Cora that when Susan gets older, she will give her the book and tell her the story of crossing the prairie. \_\_\_\_\_  
\_\_\_\_\_
8. Once Pa and Cora got to Oregon Territory, Pa built a house, and a farm. Then, a school was built. Cora took a test to become a teacher. \_\_\_\_\_  
\_\_\_\_\_
9. Cora was offered a position and journeyed north to teach school. \_\_\_\_\_
10. Cora and Susan reunited on the first day of school. On the first day of school, Susan brought the book that Cora had made her on the journey. \_\_\_\_\_

# Travel Graph

## A Book for Black-Eyed Susan

During the story *A Book for Black-Eyed Susan*, Cora and her family traveled many miles across the prairie. Use the clues below to fill out the travel data graph. When you have finished the table, create a bar graph to represent the data.

- 1: On the first day, the wagon train traveled 10 miles.
- 2: On the second day, the wagon train traveled four miles more than Day 1.
- 3: On the third day, the wagon train traveled two miles less than Day 2.
- 4: On the fourth day, the wagon train traveled one mile less than Day 5.
- 5: On the fifth day, the wagon train traveled two miles more than Day 1.



	Distance Traveled
Day 1	
Day 2	
Day 3	
Day 4	
Day 5	

**Graph Title:**

Distance  
Traveled  
in Miles

Days Traveled

My Book about *A Book for Black-Eyed Susan*

After reading *A Book for Black-Eyed Susan*, fill out the pages of your own book below. Put as much detail on each page as you can. When you have finished, cut out the pages, staple them together, and put your book in the classroom library for others to enjoy.



<p>_____ 's Book About (Your Name)</p> <p>A Book for Black-Eyed Susan</p> <p>By Judy Young</p> <p>By:</p> <p>_____</p> <p>(your name)</p>	<p>My favorite part of this book was</p> <p>because</p>
<p>This book made me feel</p> <p>because</p>	<p>My favorite character is</p> <p>because</p>
<p>After reading this book, I wanted to know more about</p>	<p>After reading this book, I learned</p>



Word Scramble

# DOWR ACELSRBM WORD SCRAMBLE

Black-Eyed Susan

Read *A Book for Black Eyed-Susan* and then practice spelling pattern and word families by using the letters below. You may only use each letter once. Start by making small words, and work your way up to making bigger words. Use all the letters only once to fill in the blanks at the bottom to figure out the mystery word.

**S R M A E O H F U**

SUN \_\_\_\_\_

\_\_\_\_\_

\_\_\_\_\_

\_\_\_\_\_

\_\_\_\_\_

\_\_\_\_\_

\_\_\_\_\_

\_\_\_\_\_

\_\_\_\_\_

\_\_\_\_\_

\_\_\_\_\_

\_\_\_\_\_

\_\_\_\_\_

\_\_\_\_\_

\_\_\_\_\_

\_\_\_\_\_

Mystery word:

\_\_\_\_\_



## Timeline

### A Book for Black-Eyed Susan



After reading *A Book for Black-Eyed Susan*, cut out the phrases in the left column. Then, paste them in order on the right side of the page. When you have finished, you will have a complete timeline of the book.

Pa tells Cora that Susan will go with her Aunt and Uncle to California.

Cora runs away from the wagon train.

Cora gives the book to her Aunt Alma to take to California with Susan.

Cora and her family begin their journey west.

Susan is born.

Cora created a quilt square of her farmhouse in Missouri.

Once in Oregon Territory, Cora becomes a teacher and moves south.

Cora and Susan are reunited.

Cora looked through her mother's sewing box.

Cora suggests her sister's name should be Susan.

Cora races back to the wagon to create quilt squares to put together as a book for Susan.

Cora watches the small wooden cross disappear.

Cora sees her baby sister's eyes. They were pitch black.

Beginning  
of  
Story

End  
of  
Story

Add a Page

A Book for Black-Eyed Susan



At the end of the story *A Book for Black-Eyed Susan*, both the reader and Cora are left in awe because Susan is in her class. In the space provided below, write what the next page of the book might say. Be sure to include dialogue between Cora and Susan. When you have finished, share with classmates. Notice similarities and differences between other students' additions to the story.

---

---

---

---

---

---

---

---

---

---

---

---

---

---

---

---

---

---

---

---

---

---

---

---

Letter Recognition

A Book for Black-Eyed Susan

Draw a line to connect the correct lower case letter to its upper case pair. Then, continue to connect the letters to the beginning sound of each picture on the far right.

T

s



S

b



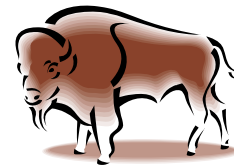
R

m



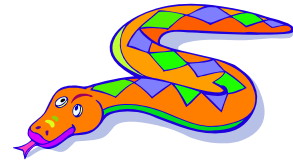
B

c



C

r



M

t



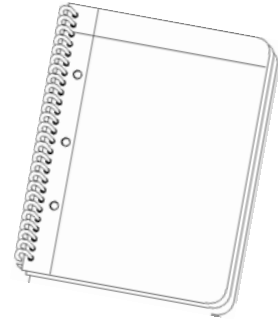
Things That Go Together

A Book for Black-Eyed Susan

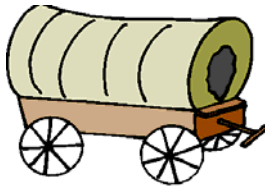
Below are pictures of items that can be seen in the pictures of *A Book for Black-Eyed Susan*. Under each picture, write the first letter of the word. Draw a line between the pictures that go together.



\_\_\_\_\_



\_\_\_\_\_



\_\_\_\_\_



\_\_\_\_\_



\_\_\_\_\_



\_\_\_\_\_



\_\_\_\_\_



\_\_\_\_\_

## Answer Key

### A Book for Black-Eyed Susan

**Math Story Problems:** 1) 100 2) 67 3) 6 (page 28) 4) 56 5) 79200

**Crossword:** 1. Missouri 2. Rock 3. Ettlinger 4. Wagon 5. School 6. California

**True or False?** 1.False: Suggests her name should be Susan 2.True 3.False: farmhouse in Missouri 4. False: Goes to Oregon with her father 5. True 6.False: used her own sewing box to create a book for Susan 7. True 8. True 9. False: South 10. True

**Travel Graph:** Day 1: 10 Day 2: 14 Day 3: 12 Day 4: 11 Day 5:12

**Timeline:**

Cora and her family begin their journey west.

Susan is born.

Cora watches the small wooden cross disappear.

Cora sees her baby sister's eyes. They were pitch black.

Cora suggests her sister's name should be Susan.

Cora looked through her mother's sewing box.

Cora created a quilt square of her farmhouse in Missouri.

Pa tells Cora that Susan will go with her Aunt and Uncle to California.

Cora runs away from the wagon train.

Cora races back to the wagon to create quilt squares to put together as a book for Susan.

Cora gives the book to her Aunt Alma to take to California with Susan.

Once in Oregon Territory, Cora becomes a teacher and moves south.

Cora and Susan are reunited.