

# MAKE YOUR OWN ROCK CHARACTER

1. Print one of the rock textures or make your own.

To make your own, paint a base color. Use a scrubby paintbrush or an old toothbrush to paint on streaks of other colors. Use the toothbrush to splatter paint onto the paper. This is kind of messy, so wear old clothes and put newspaper down on your workspace.  
(do NOT brush your teeth with this toothbrush 😊 )

2. Cut out a rock shape.

3. Glue onto a piece of paper.

4. Glue 2 white circles to the rock shape for the eyes - cut-outs from paper hole punches work well, or those plastic googly eyes!

5. Using markers, paints or colored pencils, draw the pupils, eyebrows and mouth. See the different faces on the next page for ideas.



# HOW TO DRAW DIFFERENT EXPRESSIONS

Using just a few shapes and lines, you can create a face for your character.



a circle or oval



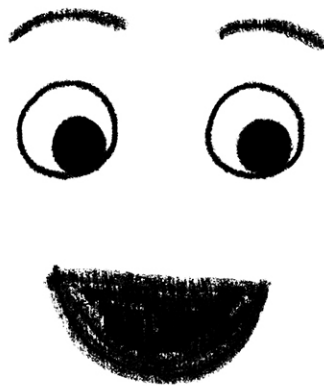
an arc



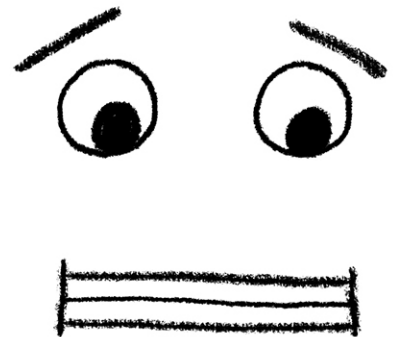
line



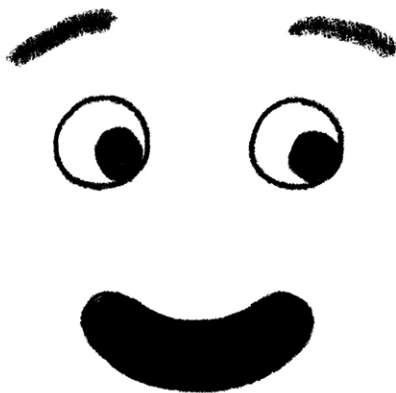
surprised



happy



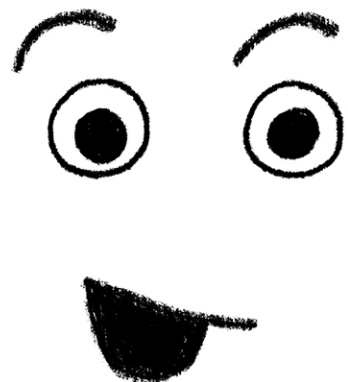
nervous or cold



silly



bored or tired



chatty



**OLD ROCK** (is not boring)

**ROCK TEXTURE**

















