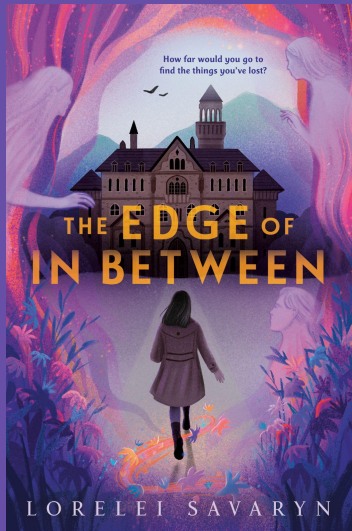


# THE EDGE OF IN BETWEEN



## About the Book

*A spellbinding tale of magical realism and superb, twisty retelling of **The Secret Garden**, where twelve-year-old Lottie's colorful world turns suddenly gray when an unexpected accident claims her parents, and she is uprooted from her home to live with an eccentric uncle she never knew she had—on the border that separates the living and the dead.*

*Lottie lives in Vivelle—the heart of a vibrant city where life exists in brilliant technicolor and nearly everyone has magic. And Lottie is no exception; she can paint pictures to life in every shade and hue imaginable. But at the sudden loss of her parents, all the color is stripped from Lottie's heart and the world around her. Taken in by her reclusive, eccentric uncle, Lottie moves into Forsaken, his vast manor located in the gray wasteland between the Land of the Living and Ever After, the land of the dead.*

*The discovery of a locked-up garden, a wise cardinal, a hidden boy, and a family whose world is full of color despite the bleakness around them begins to pull at the threads of what it means to live in such a near-dead place, slowly returning some of the color to Lottie's private world and giving her hope that life is worth experiencing fully, even while one carries sorrow.*

*But as time runs out, Lottie must find a way to thaw both the world and the hearts of her uncle, cousin, and those she has come to know and love in her new home, or all of Forsaken—including Lottie herself—will be absorbed by Ever After long before their time.*

*An exquisitely written, richly imagined, stunning portrait of love and loss, magic and hope; a true celebration of the strength we all possess to transcend tragedy—and the gifts that make life worth living.*



[www.loreleisavaryn.com](http://www.loreleisavaryn.com)



Penguin  
Random House  
PENGUIN YOUNG READERS

## About the Author

Lorelei Savaryn ([loreleisavaryn.com](http://loreleisavaryn.com)) is an author of creepy, magical stories for children. She holds a BA in creative writing and is a former elementary teacher and instructional coach. When she isn't writing or reading, she spends her time amidst the beautiful chaos of life with her husband, four children, and puppy outside of Chicago. You can follow her on Twitter @LoreleiSavaryn, or visit her website, [www.loreleisavaryn.com](http://www.loreleisavaryn.com) to learn more, book author visits, or say hello!



## How to Use this Unit Study

This standards-aligned unit of study will walk teachers and students through *The Edge of In Between*. It is both an engaging page-turner and a thematically layered novel, which makes it perfect for a classroom read-aloud, whole class/school text, book club, small group, or school reading list.

This guide is aligned with Common Core Standards for grade 5, but can be applied from grades 3-8. You will find videos, discussion questions, graphic organizers, writing exercises, and more. Please use these lessons and prompts in whatever way is helpful to you!

There is also a [Digital Guidebook](#) that links to an interactive Google Slide show. Each lesson will link you to the appropriate slide in the Guidebook, which is also available to download. It might be helpful for students to have a blank journal, or a digital journal to jot answers to some of the questions throughout the unit in preparation for discussion.



[www.loreleisavaryn.com](http://www.loreleisavaryn.com)





# The Edge of In Between

## Unit of Study

Read	Directions	Standards
<p><u>Before You Begin</u> (2 Slides)</p>	<p><b>Activity:</b> Take a look at the cover for THE EDGE OF IN BETWEEN, with art by Tracy J. Lee.</p> <ul style="list-style-type: none"> <li>- What does the cover tell you about the book?</li> <li>- What predictions do you have about the story based on the cover?</li> <li>- Visit <a href="#">Tracy J. Lee's Instagram</a> to learn more about who she is as an artist.</li> </ul> <p><b>Activity:</b> Watch the Official <a href="#">Book Trailer</a> for THE EDGE OF IN BETWEEN:</p> <ul style="list-style-type: none"> <li>- How does the Book Trailer set the tone for the story?</li> </ul> <div data-bbox="417 945 1157 1358" data-label="Image"> </div> <p><b>Activity:</b></p> <ul style="list-style-type: none"> <li>- What are you most excited about as you jump into reading this story?</li> <li>- Search online to see if there are other book trailers available to watch from stories that you've loved. How did the creators of the</li> </ul>	<p><a href="#">RL.5.7</a></p> <p><a href="#">SL.5.1</a></p>



	<p>book trailer do in representing those stories compared to what you imagined in your own mind?</p> <p><b>Activity:</b> Download or print the <a href="#">“Edge of In Between Sketchbook”</a> in preparation for upcoming prompts, or share it with students to use digitally. This sketchbook is meant to be a way for students to engage creatively with this story, and to be a keepsake for when the story is finished.</p>																													
<p><b>Read:</b> <a href="#">All That a Color Can Hold</a></p>	<p><b>Discussion Questions:</b></p> <ul style="list-style-type: none"><li>- Describe Lottie’s worldview, particularly how she perceives magic in her world and the Living Gray she sees around her. Use evidence from the text to support your answer.</li><li>- What is your initial impression of The Living Gray and Splintered Magic? What questions do you have?</li></ul> <p><b>Activity:</b> This book is a magical retelling of The Secret Garden. Watch the movie adaptation of the book from 1993, and fill in the <a href="#">graphic organizer</a>. Hang on to this until the end of the unit, or fill in details from this retelling as you go!</p> <div><div></div><table><thead><tr><th>Story Element</th><th>Characteristics/Details</th></tr></thead><tbody><tr><td>Mary Lennox</td><td></td></tr><tr><td>Mrs. Medlock</td><td></td></tr><tr><td>Dickon</td><td></td></tr><tr><td>The Indian</td><td></td></tr><tr><td>Colin</td><td></td></tr><tr><td>Martha</td><td></td></tr></tbody></table></div> <div><div></div><table><thead><tr><th>Story Element</th><th>Characteristics/Details</th></tr></thead><tbody><tr><td>Lottie Burnett</td><td></td></tr><tr><td>Mrs. Hale</td><td></td></tr><tr><td>Timmy</td><td></td></tr><tr><td>The Cardinal</td><td></td></tr><tr><td>Clement</td><td></td></tr><tr><td>Agnes</td><td></td></tr></tbody></table></div>	Story Element	Characteristics/Details	Mary Lennox		Mrs. Medlock		Dickon		The Indian		Colin		Martha		Story Element	Characteristics/Details	Lottie Burnett		Mrs. Hale		Timmy		The Cardinal		Clement		Agnes		<p><a href="#">RL 5.1</a></p> <p><a href="#">RL 5.9</a></p> <p><a href="#">SL 5.1</a></p>
Story Element	Characteristics/Details																													
Mary Lennox																														
Mrs. Medlock																														
Dickon																														
The Indian																														
Colin																														
Martha																														
Story Element	Characteristics/Details																													
Lottie Burnett																														
Mrs. Hale																														
Timmy																														
The Cardinal																														
Clement																														
Agnes																														
<p><b>Read:</b> <a href="#">Alone in the World</a></p>	<p><b>Discussion Questions:</b></p> <ul style="list-style-type: none"><li>- Describe your reaction to Lottie’s immense loss. How did you feel as a reader when reading it, and how do you feel for her as the character who is living it? Are there any ways you can relate to Lottie’s experience?</li><li>- Do you think Lottie should have fought harder to keep her magic,</li></ul>	<p><a href="#">RL 5.3</a></p> <p><a href="#">SL 5.1</a></p>																												

	<p>even if it meant it would have splintered? Why or why not?</p> <p><b>Activity:</b> Color plays a vital role in this story, from the beginning to the very end. Turn to page 1 in your sketchbook and draw a visual representation of Lottie's world in the first chapter of the book and a contrasting visual representation of her world at the end of this chapter, including details from the text. Share.</p>	
<p><b>Read:</b> <i>An Uncle</i></p>	<p><b>Discussion Questions:</b></p> <ul style="list-style-type: none"> <li>- What kinds of things help you when you have experienced something that made you sad?</li> <li>- What have we learned about Henry Warwick so far/why is the news that he is still alive surprising?</li> </ul> <p><b>Activity:</b> Lottie is bearing the weight of a great loss with very little support. If you were Lottie's friend, what would you do to support her? Turn to page two of your sketchbook and choose one of the following options:</p> <ul style="list-style-type: none"> <li>- Write Lottie an encouraging letter as if you are her friend</li> <li>- Draw a picture of a gift you would give Lottie, and write a few sentences explaining why you chose it</li> <li>- Write a paragraph describing something you would <i>do</i> for Lottie to be a good friend to her during this time.</li> </ul>	<p><u>RL 5.1</u></p> <p><u>SL 5.1</u></p> <p><u>W 5.1b</u></p> <p><u>W 5.4</u></p> <p><u>W 5.10</u></p>
<p><b>Read:</b> <i>The Gray Lady</i></p>	<p><b>Discussion Questions:</b></p> <ul style="list-style-type: none"> <li>- If you only had a small suitcase to take a few things with you for an extended time away from home, what items would you include, and why?</li> <li>- What are your first impressions of Mrs. Hale?</li> <li>- What do you think most convinces Lottie to go with Mrs. Hale? Why do you think that tipped the balance for her more than staying with Nellie?</li> </ul> <p><b>Activity:</b> Draw a picture of Mrs. Hale as she is described in this chapter on page 3 of your sketchbook.</p>	<p><u>RL 5.1</u></p> <p><u>RL 5.3</u></p> <p><u>SL 5.1</u></p>
<p><b>Read:</b> <i>The In Between</i></p>	<p><b>Discussion Questions:</b></p> <ul style="list-style-type: none"> <li>- Compare and contrast the world of Vivelles as Lottie has known it</li> </ul>	<p><u>RL 5.1</u></p> <p><u>RL 5.3</u></p>





	<p>for most her life, to The In Between using details from the text.</p> <ul style="list-style-type: none"> <li>- Discuss your reaction to the ghosts, and your thoughts on why some of them are standing still while others are walking or even running to the mountains.</li> <li>- Lottie is embracing her new mission to find her parents' ghosts. Do you think her plans are wise/good for her? Why or why not? What could be the possible outcomes if she does find her parents?</li> </ul>	<a href="#"><u>SL 5.1</u></a>
<p><b>Read:</b> <a href="#"><u>Forsaken</u></a></p>	<p><b>Discussion Questions:</b></p> <ul style="list-style-type: none"> <li>- List some details that Lottie observes about Forsaken. How do these details impact the atmosphere of the story? Which made the most impact on you and why?</li> <li>- Share your predictions as to why the house is groaning.</li> </ul> <p><b>Activity:</b> Draw a picture of the tapestries, using details from the book, on page 4 of your sketchbook.</p>	<a href="#"><u>RL 5.1</u></a>  <a href="#"><u>SL 5.1</u></a>
<p><b>Read:</b> <a href="#"><u>Agnes and George</u></a></p>	<p><b>Discussion Questions:</b></p> <ul style="list-style-type: none"> <li>- Why is Lottie irritated by Agnes and George? Use evidence from the text to support your answer.</li> <li>- Why do you think these two people with their magic and their color might be at Forsaken?</li> </ul>	<a href="#"><u>RL 5.1</u></a>  <a href="#"><u>SL 5.1</u></a>
<p><b>Read:</b> <a href="#"><u>The Frozen Tree</u></a></p>	<p><b>Discussion Questions:</b></p> <ul style="list-style-type: none"> <li>- In the original <i>Secret Garden</i>, Mary encounters a robin. In this story, Lottie encounters a cardinal. How are the birds' roles similar/different so far?</li> <li>- Lottie's goal shifts again by the end of this chapter. Why do you think she wants to get into the frozen garden so badly?</li> </ul> <p><b>Activity:</b> Bird Feeder: Collect pine cones, and attach some string or twine to one end. Spread peanut butter over the pine cone and roll in bird seed. Hang on a tree at home or outside your classroom window and see if you can attract any cardinals or other bird species.</p>	<a href="#"><u>RL 5.1</u></a>  <a href="#"><u>RL 5.9</u></a>  <a href="#"><u>SL 5.1</u></a>

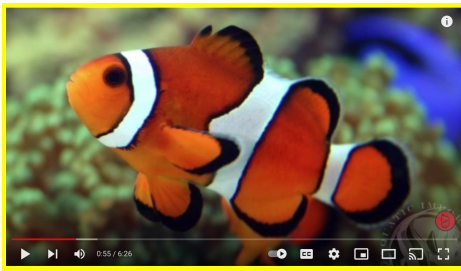
**Activity:** How to Draw A Cardinal:

[Watch this video](#) and learn how to draw a cardinal on page 5 of your sketchbook.



**Read:** [A Fiery Heart](#)

**Activity:** The 5 Stages of Grief were an important part of the author's construction of this story, and in particular the journeys of the characters who have experienced loss. [Watch this short video](#) to learn a bit about the stages of grief via the popular film, *Finding Nemo*.



**Discussion Questions:**

- What stage of grief is Lottie in for the bulk of this chapter? How do you know?
- Given what you've learned about the Stages of Grief, what other stages has she gone through so far? Cite specific examples in the text.
- What do you think Agnes means when she says: "I know you must miss them something awful, but searching the In Between for ghosts isn't healthy. Even if you think you're doing it for the *best* of reasons."?
- Agnes gives Lottie a strange answer about the noises she's hearing in the house. Do you think she's telling the truth? If so, why? If not, what do you think is really going on?

[RL 5.1](#)

[SL 5.1](#)

[SL 5.2](#)



[www.loreleisavaryn.com](http://www.loreleisavaryn.com)



<b>Read:</b> <u>Henry Warwick, The Splintered</u>	<b>Discussion Questions:</b> <ul style="list-style-type: none"> <li>- What are your initial impressions of Henry Warwick? Was he what you expected, or did he surprise you? Explain your thinking.</li> <li>- How do you feel about Lottie and Warwick's determination to find the ghosts of the ones they've lost and why? What would you do in their situation?</li> </ul> <p><b>Activity:</b> Sometimes, authors make the choice to take something abstract and portray it in a concrete way in their story. In <i>The Edge of In Between</i>, Henry Warwick collects sorrow in a huge vat. Read another story where something abstract is made concrete. <u>What Do You Do With a Problem?</u> and <u>What Do You Do With an Idea?</u> are two great choices. Then, choose something abstract, like an emotion or a concept, and write and illustrate a story that turns it into something concrete that your character can interact with. Complete on page 6 of your sketchbook.</p>	<u>RL 5.4</u>  <u>SL 5.1</u>  <u>W 5.4</u>  <u>W 5.10</u>  <u>L 5.5</u>
<b>Read:</b> <u>The Crying Hall</u>	<b>Discussion Questions:</b> <ul style="list-style-type: none"> <li>- Based on the descriptions of Forsaken in this chapter, what do you think this house was like before Warwick's magic splintered?</li> <li>- Who do you think is in that room? What evidence leads you to your conclusion?</li> </ul>	<u>RL 5.1</u>  <u>SL 5.1</u>
<b>Read:</b> <u>The Hidden Boy</u>	<b>Discussion Questions:</b> <ul style="list-style-type: none"> <li>- In this chapter, Clement offers Lottie an alternate perspective on the things going on at Forsaken. How has his experience been different from Lottie's, and how do they each view Henry Warwick, Mrs. Hale, and splintered magic at this point in the story?</li> <li>- If you were Clement, would you go with Lottie to the garden, if it meant you might miss seeing your father? Why or why not?</li> </ul> <p><b>Activity:</b> Read the chapter <u>"I am Colin"</u> from the original <i>Secret Garden</i>. Compare and contrast the similarities and differences in events of the original chapter and in this chapter of the retelling. How are the characters of Colin and Clement similar/different?</p>	<u>RL 5.1</u>  <u>RL 5.9</u>  <u>SL 5.1</u>
<b>Read:</b> <u>This</u>	<b>Discussion Questions:</b>	<u>RL 5.1</u>





<p><u>Key With the Heart</u></p>	<ul style="list-style-type: none"> <li>- Compare Lottie's goal in this chapter to her goal for most of the book so far. What do you think has changed, and why?</li> <li>- What do you think will happen next? Use clues from the text to support your predictions.</li> </ul> <p><b>Activity:</b> Use descriptions from the text to create your own page from <i>The Enchanted Garden</i> book, including the riddle <i>or</i> illustrate a moment from this chapter using details from the story. Include a quote from the text beneath your picture. Complete on page 7 of your sketchbook.</p>	<p><u>SL 5.1</u></p>
<p><b>Read:</b> <u><i>The Garden of Ice and Decay</i></u></p>	<p><b>Discussion Questions:</b></p> <ul style="list-style-type: none"> <li>- How might one perceive the garden here as a metaphor for Lottie and her journey? In what ways are they similar?</li> <li>- Why do you think the tree gave Lottie and Clement those specific gifts? If you were to receive a magical gift, something that called to a deep and personal part of the way you've been created, what would you hope to receive and why?</li> </ul> <p><b>Activity:</b> Take a close look at the extended metaphor on page 150: "Since that terrible night, her sadness had tossed her about like a boat at sea during a wicked storm. Her feelings could swing this way and that within a single instant. However, right now, she was watching the ocean roll with waves, but not from the deck of a boat. The sadness was still there, and it was still heavy. But in this moment, at least, she was watching from the shore, her feet planted on the sand, the water licking her toes."</p> <p>What is Lottie's sorry being compared to in this section? Think of another strong feeling, and find a way to compare it to something using the word "like" or "as." Draw a picture to portray your simile with the words written below it on page 8 of your sketchbook.</p>	<p><u>RL 5.1</u></p> <p><u>RL 5.4</u></p> <p><u>SL 5.1</u></p> <p><u>W 5.4</u></p> <p><u>L 5.5</u></p>
<p><b>Read:</b> <u><i>Timmy</i></u></p>	<p><b>Discussion Questions:</b></p> <ul style="list-style-type: none"> <li>- Lottie and Clement have been taught to believe that the Living Gray are destined to be gray forever. How does the melting branch on the tree call that assumption into question?</li> <li>- As Timmy explains how he got into the garden, he says: "Well, first she asked me why I wasn't moving. And I told her I wasn't sure I wanted to go to the mountains—so many of the ghosts act so <i>sure</i>. Like they somehow <i>know</i> Ever After is a good place. But I didn't know that. I don't know if it's good. Some people,</li> </ul>	<p><u>RL 5.1</u></p> <p><u>SL 5.1</u></p> <p><u>SL 5.1d</u></p>



	<p>and ghosts, have an easier time of it than others. It's hard for me to trust something that I've never seen for myself."</p> <p>How might Timmy's struggle relate to the areas in our lives where we have big questions or uncertainty? What do you do when facing something new and unfamiliar?</p> <p><b>Activity:</b> Cardinals have a special meaning to many people. Read <a href="#">this brief website</a> together to learn about what cardinals symbolize to some, and discuss your thoughts.</p>	
<p><b>Read:</b> <a href="#">Hope Unfurling</a></p>	<p><b>Discussion Questions:</b></p> <ul style="list-style-type: none"> <li>- Why do you think Lottie cried when Clement told her she was blushing?</li> <li>- Why do you think her tears had the effect they did? Share your thoughts on the idea that there are different kinds of tears.</li> </ul> <p><b>Activity:</b> Flowers have carried significant meaning throughout history. Take a look at the Farmer's Almanac <a href="#">"Language of Flowers"</a> webpage. Research a list of 2-3 people in your own life who you could send a message to using flowers. Write who you are sending the flowers to, which flowers you would choose, and why. Find a picture of your chosen flower online and sketch it on page 9 of your sketchbook.</p>	<p><a href="#">RL 5.1</a></p> <p><a href="#">SL 5.1</a></p> <p><a href="#">SL 5.1c</a></p> <p><a href="#">W 5.4</a></p> <p><a href="#">W 5.7</a></p> <p><a href="#">W 5.10</a></p>
<p><b>Read:</b> <a href="#">The Thawing</a></p>	<p><b>Discussion Questions:</b></p> <ul style="list-style-type: none"> <li>- How does Timmy's experience as a ghost compare with how Lottie has thus far expected her reunion with her parents to be, should she find them? Do you think it would be everything she hopes? Why or why not?</li> <li>- Lottie reflects on the day she agreed to come to Forsaken, and how she thought that going with Mrs. Hale was the only thing that could help her? How has Lottie changed from that moment to now? What uncertainties does she still carry inside her?</li> <li>- Agnes helps Lottie and Clement connect the dots that their healing means that there is less sorrow to collect to move Forsaken through the In Between. Do you think this is a good thing, or a bad thing, and why?</li> <li>- Discuss the impact of grief upon a person. What do you think Clement and Lottie mean when they describe what they're going</li> </ul>	<p><a href="#">RL 5.1</a></p> <p><a href="#">RL 5.3</a></p> <p><a href="#">SL 5.1</a></p> <p><a href="#">SL 5.1d</a></p>



	through as something that doesn't really have an end?	
<b>Read:</b> <u><i>The Family</i></u>	<p><b>Discussion Questions:</b></p> <ul style="list-style-type: none"> <li>- How is the Bunch of Bunches, and the lone bunch Lottie finds alone, a metaphor in the context of this story?</li> <li>- What questions do you have after the revelation at the end of this chapter? What are your predictions?</li> </ul> <p><b>Activity:</b> Lottie makes the assumption that just because Agnes and her family have their magic and their color, that they haven't faced sorrow. After Agnes reveals that they, too, are a family still healing, she says: "You can't know a person's whole life story just by the parts of them they let you see." Write about a time when either you made an assumption about someone or a group of people that turned out to be wrong, or when someone made a wrong assumption about you, and what happened after. Share your stories with a group of your classmates and discuss the danger in making assumptions about others.</p>	<p><u>RL 5.1</u></p> <p><u>RL 5.4</u></p> <p><u>SL 5.1</u></p> <p><u>SL 5.1C</u></p>
<b>Read:</b> <u><i>Hemlock</i></u>	<p><b>Discussion Questions:</b></p> <ul style="list-style-type: none"> <li>- How does Lottie react to the family's reunion with Timmy? How does her reaction demonstrate the ways her character has changed from the beginning of the story?</li> <li>- Lottie reasons: "And beyond that, if George was right—that the In Between was only ever meant to be a temporary place, and that it wasn't any more natural for Timmy to linger here forever than it was for living people to be here at all—what did that mean for Lottie? For all of them? What do you think it means for all of them, and why?</li> <li>- If you were Lottie, what would you do next?</li> </ul>	<p><u>RL 5.1</u></p> <p><u>SL 5.1</u></p> <p><u>SL 5.1C</u></p>
<b>Read:</b> <u><i>The Splinter</i></u>	<p><b>Discussion Questions:</b></p> <ul style="list-style-type: none"> <li>- Looking back, what clues point to Mrs. Hale being the manifestation of Henry Warwick's splinter? Did this revelation surprise you, or did you see it coming? Explain.</li> <li>- Lottie thinks: Splintered magic was magic that had broken off from the source of beauty and goodness and life. And because of it, splintered magic couldn't reflect any of those things anymore. In fact, it became the opposite of what it was intended to be. And, therefore, splintered magic could only be ugly, and bad, and destructive.</li> </ul>	<p><u>RL 5.1</u></p> <p><u>RL 5.3</u></p> <p><u>SL 5.1</u></p> <p><u>SL 5.1C</u></p>



	<p>What do you think about the idea that in life, a thing or a person is most beautiful when it is fulfilling the purpose for which it was made? Can you think of any examples where you've seen this to be true?</p> <p><b>Activity:</b> On page 10 of your sketchbook, draw a picture of Mrs. Hale as she is described in this chapter when she reveals her true self. Compare this to your earlier picture of her on the train.</p> <p>Discuss how Mrs. Hale hides her true self from Lottie for most of the book. How is this similar to or different from how Lottie didn't understand Agnes's true story?</p>	
<p><b>Read:</b> <i><u>The Veil</u></i></p>	<p><b>Discussion Questions:</b></p> <ul style="list-style-type: none"> <li>- Why wasn't Forsaken able to immediately crash through the Veil? And why are they still in danger?</li> <li>- If you were Lottie, how would you feel as Mrs. Hale disappeared down the hall?</li> <li>- What are your predictions for what's going to happen next?</li> </ul> <p><b>Activity:</b> Draw a picture of Ever After, using details from the story, on page 11 of your sketchbook.</p>	<p><u>RL 5.1</u></p> <p><u>SL 5.1</u></p>
<p><b>Read:</b> <i><u>The Great Tangle</u></i></p>	<p><b>Discussion Questions:</b></p> <ul style="list-style-type: none"> <li>- How does Lottie compare herself to her father in this chapter? And how does that comparison help her?</li> <li>- How does Lottie's unique magic save the day? What would have happened if Lottie had chosen not to heal?</li> </ul> <p><b>Activity:</b> If you were going to put color to the hopes you have for your own life, what would they be? Make a list of things you hope for or are looking forward to and give them each a color. Create a visual depiction of those hopes on page 11 of your sketchbook using both the words and colors.</p>	<p><u>RL 5.1</u></p> <p><u>SL 5.1</u></p>
<p><b>Read:</b> <i><u>A Final Goodbye</u></i></p>	<p><b>Discussion Questions:</b></p> <ul style="list-style-type: none"> <li>- How did the garden protect itself until Lottie and Clement came?</li> <li>- What was your reaction to Lottie's reunion with her uncle? To Clement's reunion with his father? Discuss how this speaks to</li> </ul>	<p><u>RL 5.1</u></p> <p><u>SL 5.1</u></p>



	<p>the power of young people to make an impact.</p> <ul style="list-style-type: none"> <li>- This book relies heavily on the power of hope. Discuss Lottie, Clement, and Henry Warwick's transitions from hopelessness to hope, and how that connects with their magic. Have you experienced any sort of similar journey in your own life? How have you found hope again after a loss?</li> </ul> <p><b>Activity:</b> Lottie showed greater perseverance and bravery than her uncle could. Think of other times in your own life or in history when a young person made an incredible impact. Make a list as a class and choose one person to research. Create a presentation of your choosing and share about that person with your class.</p> <p><b>Activity:</b> Lorelei always makes a playlist for her books. Find <a href="#">The Edge of In Between playlist here</a> and follow along with Lottie's journey in song.</p>	<p><a href="#">SL 5.1C</a></p> <p><a href="#">SL 5.4</a></p> <p><a href="#">SL 5.5</a></p> <p><a href="#">W 5.2</a></p>
<p><b>Read:</b> <a href="#">Restored</a></p>	<p><b>Discussion Questions:</b></p> <ul style="list-style-type: none"> <li>- In this story, everyone's magic is meant to add beauty to the world and make it a better place. In what areas do you feel especially passionate? How can you develop and use your gifts and talents to make the world a better place?</li> <li>- Share your thoughts on the ending with your classmates. Was it satisfying? Do you still have lingering questions?</li> <li>- What stage of grief do they end this story at, and how do you know?</li> <li>- What do you think will happen next in Lottie and Clement's journey?</li> </ul> <p><b>Activity:</b> On page 12 of your sketchbook, draw your version of Lottie's mural, using key scenes from her story, in a way that would allow people passing by to know that the Living Gray can heal and find their way back to hope.</p> <p><b>Activity:</b> Refer back to your graphic organizer from the beginning of the story, with details filled in from the 1993 movie adaptation of the original book. Take time to fill in the side for The Edge of In Between if you haven't yet.</p>	<p><a href="#">RL 5.1</a></p> <p><a href="#">RL 5.9</a></p> <p><a href="#">SL 5.1</a></p> <p><a href="#">SL 5.1C</a></p>



Then, discuss the following:

- In what ways are the two stories similar? Different?
- Why do you think the author made some of the choices/changes she did?
- Share if you would have done something differently, or what your favorite twists on the original were and why?

**Activity:** The three different locations in this story are unique, but also uniquely connected to each other. Draw a detailed map of Vivelite, The In Between, and Ever After, as you imagine them. Include details from the text from anywhere in the book.

**Activity:** Find another retelling of a classic story and read it either individually or in groups, with an eye to how the author adapted the original and gave it a fresh twist. Here are some wonderful options:

*The Gilded Girl by Alyssa Colman/The Little Princess*

*The Humming Room by Ellen Potter/The Secret Garden*

*Sisters of the Neversea by Cynthia Leitich Smith/Peter Pan*

*A Wish in the Dark by Christina Soontornvat/ Les Miserables*

*Midsummer's Mayhem by Rajani LaRocca/Midsummer Night's Dream*

*Much Ado About Baseball by Rajani LaRocca/Much Ado About Nothing*



[www.loreleisavaryn.com](http://www.loreleisavaryn.com)

